



CENTRAL PARK NURSERY

Caring Playing Nurturing



KIDS CLUB PROSPECTUS

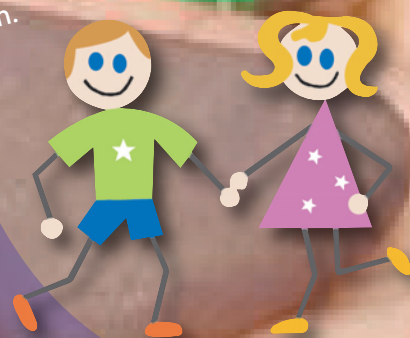
Central Park Nursery Kids Club offers a Breakfast and After School Club during term time and a Holiday Club over the School Holidays. These Clubs are open to children aged between 4 and 11 years and are a fun, friendly, stimulating and safe place to be!

BREAKFAST & AFTER SCHOOL CLUB

Our Breakfast Club runs from 7.30am – 8.40am and our After School Club from 3.00pm – 6.00pm. We also offer a pick-up and drop-off to some local schools. For more information, please enquire at the Nursery Office or refer to the supplement sheets.

Staff appreciate that after a day at school children need to unwind, therefore the first part of the afternoon will entail a light tea; then the children can choose either relaxing free

play or more structured activity. Please see activities lists. We also have good IT facilities and children are welcome to do their homework if they wish.



HOLIDAY CLUB

Holiday Club at Central Park Nursery is open from 7.30am – 6.00pm and runs throughout the School Holidays other than the week between Christmas and New Year. We offer the children a host of

exciting activities during their day with us including a range of ball games, sports, a ball pool and soft play. There are also plenty of art and craft activities, which all the children enjoy and love having creations to take home.





Holiday Club activities the children as much

Example of a Daily Programme

- 7.30 - 9.00 : Free Play
- 9.00 - 9.30 : Register and get to know you
- 9.30 : Planned Activity
- 10.30 : Morning Snack Time
- 10.45 : Outside Activity / Ball Pool
- 12.00 - 1.00 : Lunch
- 1.00 - 1.30 : Fun & Games
- 1.30 - 2.30 : Planned Activity
- 2.30 - 2.45 : Afternoon Snack Time
- 2.45 : Outside Activity / Ball Pool
- 3.45 : Tea
- 4.30 - 6.00 : Free Play / Home-time

Examples of Planned Activities

- Monday : Aboriginal Painting and Frosted Spider Webs
 - Tuesday : Under the Sea Collage and Seahorses
 - Wednesday : Pizza Making and Ice Cream Sundaes
 - Thursday : Music with Guitars and Making Shakers
 - Friday : Forest School - on-site or at Wrekin Forest School
- All we ask from parents is that the children attend Kids Club with clothing and footwear suitable for the daily activities, and where appropriate sun cream and a sunhat.

Club Outdoor Activities

- Large Art Activities
- Construction
- Sports, Ball Games, Rounders, Football
- Local Walks
- Role Play & Dressing Up
- Sand & Water Play
- Wheeled Toys and Ride-ons
- Forest School - on-site or at Wrekin Forest School
- Trips out - Town Park, Hoo Farm, Bowling, Cinema

In the Easter and Summer Holidays we make the most of the warm weather and take our Holiday Club off-site for visits to the Wrekin, which the children really enjoy; climbing trees on the way up and an ice cream on the way down!!

We also run visits to the Town Park, Tile Museum, Hoo Farm and a local organic farm where the children enjoy the nature trail, see a working milking parlour and meet the cows that give us lovely organic milk. Holiday Club children also enjoy trips to the cinema and bowling alley.

Club Indoor Activities

- Computer and Games Station
- Music and DVD
- Homework Facilities
- Jigsaws and Puzzles
- Small-world toys (cars, trains, puppets etc.)
- Role Play and Dressing Up
- Ball Pool and Soft Play
- Reading Area
- Construction Toys
- Board Games
- Art and Craft Activities
- Cooking
- Sand & Water Play
- Play Dough & Clay



Activities are planned in advance to offer lots of fun as we can squeeze in to one day!



CHARITY DAYS & SPECIAL DAYS

Central Park Nursery run Charity Days in support of various charities, which include pyjama days, sponsored walks and bake sales. We hold these events not only for the children to raise money in a fun way but to help their understanding of the world we live in and that it is kind to help and respect one another. Charity Days are a great way to do this while the children are enjoying themselves.

On Special Days we have visitors to Central Park Nursery including the animal man, a magician, a fire engine, the Police and Guide Dogs plus fun activities like bouncy castles, dressing up and themed days to name just a few!

The children love to join in these activities as much as we love to organise them!

FOREST SCHOOL

Forest School offers the children at Holiday Club and Nursery the opportunity to explore and discover the natural world in a woodland environment and to enjoy being outdoors. Taking part in Forest School is an exciting adventure and actively develops independence, confidence, self-esteem and motivation through hands-on experiences. Children learn how helpful and fun woodlands can be as well as being aware of the risks and challenges. It encourages them to work as a team, solve problems and respect behaviour boundaries.

Forest School activities for the younger children include bug hunting and playing hide & seek around the trees, whilst older children enjoy archery, den and shelter building, woodcraft and how to apply concepts they have learnt in School. The children also love to make tree swings and prepare and cook meals outdoors. Central Park Nursery run their own Forest School activities on-site and are also regular visitors to Wrekin Forest School.

OUR FOOD

Breakfast, Lunch and Tea are provided for all children at Kids Club. We have a qualified Cook who is on-site every day preparing fresh, delicious meals for the children. Our menu is specially designed to ensure all children have a balanced and nutritious meal. We have a 4-week rolling menu to ensure all children have the opportunity to try a range of food during their days with us. With an on-site Cook we are able to cater for dietary requirements and allergies, or to follow religious practices and parental/child preferences.

Central Park Nursery hold a 5-star rating from the Food Standards Agency and regular visits from Environmental Health have always been positive regarding our high standards in food preparation and cleanliness. We are also part of Telford & Wrekin Healthier Catering Commitment as we understand how important it is for children to have foods that are healthy and nutritious to help with their mental and physical development.



STAFF, SAFEGUARDING AND SECURITY

Central Park Nursery understands its responsibility to uphold a level of care to ensure the safety and security of all children at Kids Club. Children have a right to feel and be safe and we have measures in place to ensure that this is the case.

Our front door is always locked and unfamiliar people are not allowed access without ID. If for any reason, a family member we have not seen before is collecting your child, please inform Nursery in advance to provide us a visual description and a password.

All staff members are employed through a safer recruitment process where references are gained, extensive interviews take place and all staff members are DBS checked.

All staff are fully First Aid trained (apprentices can be an exception) and your child will never be left with an unqualified member of staff.

Full policies regarding Safeguarding can be requested from the Nursery Office.



POLICIES & PROCEDURES

Our Policies and Procedures are held in the Nursery Office and can be viewed on request. Our Policies help us make sure the service provided by Central Park Nursery is consistent and of high quality and that being a member of our Nursery is an enjoyable and beneficial experience for every child and her/his family.



OPENING TIMES AND LATE COLLECTION

Central Park Nursery opens at 7:30am and closes at 6.00pm. Outside of these times we are not insured to have children onsite. If you arrive on site before Nursery opening time, we cannot permit your child to enter until 7.30am. If you are going to be later than 6.00pm picking up your child then we need to be informed immediately. Your child will remain at Nursery with two staff members until you arrive. An additional charge of £5.00 will be added to your bill for every 15 minutes after 6.00pm. We would appreciate this not being a regular occurrence if possible.

COMPLAINTS

If you need a copy of the Complaints Procedure it can be requested from the Nursery Office or found on the Parents' Board in the foyer.

WHERE TO FIND US...

As our name implies Central Park Nursery is conveniently located on a Business Park close to Telford Town Centre, with the railway station, motorway and main routes nearby, making it ideally situated for working parents.

Central Park Nursery is open all year round, except for one week at Christmas.

Please see the supplement sheet for times and fees and the admissions form for completion and return.

Central Park Nursery

8 Hawksworth Road, Central Park,

Telford, Shropshire TF2 9TU T : 01952 292092

E : marie@centralparknursery.co.uk www.centralparknursery.co.uk

Owners : Marie Davies & Paul Styles

